

ADI HP-GL/2 Driver

Getting Started





Océ-Technologies B.V.

Trademarks

Products in this manual are referred to by their trade names. In most, if not all cases, these designations are claimed as trademarks or registered trademarks of their respective companies.

Copyright

Océ-Technologies B.V. Venlo, The Netherlands © 2000

All rights reserved. No part of this work may be reproduced, copied, adapted, or transmitted in any form or by any means without written permission from Océ.

Océ-Technologies B.V. makes no representation or warranties with respect to the contents hereof and specifically disclaims any implied warranties of merchantability or fitness for any particular purpose.

Further, Océ-Technologies B.V. reserves the right to revise this publication and to make changes from time to time in the content hereof without obligation to notify any person of such revision or changes

Code number 0101.884

Edition N May 2000

This manual documents ADI HP-GL/2 Driver, version 2.6



Contents

Installing the Driver for AutoCAD-DOS 5

- Installing using the Océ Drivers CD-ROM 5
- Installing using diskettes 5
- Installing using files you have downloaded from the Océ Web site 5
- Common installation instructions 6

Installation for AutoCAD-Windows 7

- Using the Océ Drivers CD-ROM 7
- Using diskettes 7
- Installing files you have downloaded from the Océ Web site 8

Updating the driver for AutoCAD 14 9

Configuration 10

- Configuring your plotter 10
- Defining a new plotter in AutoCAD 10
- Plotting parameters 11
- Changing pen parameters 11
- Selecting a new plotter and default settings 12
- Entering the Océ Configuration Manager 12

Troubleshooting 13

This manual contains instructions for installing the Océ ADI HP-GL/2 drivers for DOS and Windows environments and selecting the Océ printers that you will configure and use for printing your files.

Once a printer is defined, you may either:

- *Perform the plotter's configuration at the front panel and submit plots from your AutoCAD workstation.*
- *Define the plotter's settings remotely from your workstation thanks to the advanced Océ Configuration Manager (see page 12).*



Installing the Driver for AutoCAD-DOS

Before installing the ADI HP-GL/2 driver, ensure that AutoCAD for DOS has been installed according to Autodesk's requirements.

Locate the AutoCAD directory and the **ACAD.CFG** file.

Installing using the Océ Drivers CD-ROM

- ▼ **Proceed as follows:**
- 1 Insert the Océ Drivers CD-ROM into your CD-ROM drive.
 - 2 Switch to the appropriate drive.
 - 3 Type **PRODUCTS\ADI\DISK\INSTALL.EXE**
 - 4 Follow the common installation instructions below.

Installing using diskettes

- ▼ **Proceed as follows:**
- 1 Insert the diskette entitled **Océ ADI HP-GL/2 Driver for AutoCAD-DOS** in your diskette drive.
 - 2 Enter the command **A:\INSTALL.EXE** at the DOS prompt.
 - 3 Follow the common installation instructions below.

Installing using files you have downloaded from the Océ Web site

- ▼ **Proceed as follows:**
- 1 Follow the instructions on the Océ Web site to download, extract the files and open the **INSTALL.EXE** program.
 - 2 Follow the common installation instructions below.

Note: *Our software development engineers are permanently improving the drivers we supply with our products. We recommend that you regularly visit our Web site (<http://www.oce.com>) and consult the **Download/Wide Format Printer Drivers** section for downloading the most up-to-date version of the driver covered in this manual.*

Common installation instructions

The rest of the installation instructions are the same for all users.

▼ **Proceed as follows:**

- 1 Follow the instructions that appear on the screen.
- 2 Specify the AutoCAD directory.
- 3 Specify which directory contains the **ACAD.CFG** file.
- 4 The installation program creates the target directory and loads the files on your hard-disk.
- 5 Using any text editor, consult the **README.TXT** file which has been loaded in the target directory. This file may contain last minute additional information.

The installation is complete. Refer now to 'Configuration' on page 10.

Installation for AutoCAD-Windows

Before installing the driver, ensure that either version 12, 13 or 14 of AutoCAD for Windows has been installed according to Autodesk's requirements.

Note: *The installation of the driver under Windows NT or Windows 2000 must be executed by the system administrator.*

Using the Océ Drivers CD-ROM

▼ **Proceed as follows:**

- 1 Insert the Océ Drivers CD-ROM into your CD-ROM drive.
If *Autorun* is installed on your computer, the Océ Drivers main menu screen is automatically displayed.
If not, use Windows Explorer or File Manager to locate the file **OCEMENU.EXE** on the CD-ROM and double-click on it.
- 2 Click the **Install Products** button.
The Install Products screen is displayed.
- 3 Click the **ADI HP-GL/2 Driver** button.
The ADI Driver screen is displayed.
- 4 Follow the instructions that appear on the screen.

The installation is complete. Refer now to 'Configuration' on page 10.

Using diskettes

▼ **Proceed as follows:**

- 1 Insert the diskette entitled **Océ ADI HP-GL/2 Driver for AutoCAD-Windows** (AutoCAD 12, 13-C3 or 13-C4) in your diskette drive.
- 2 Select the command **Run...** from the **File** menu or from the taskbar.
- 3 Type the command **A:\SETUP**.
The ADI Driver screen is displayed.
- 4 Follow the instructions that appear on the screen.

The installation is complete. Refer now to 'Configuration' on page 10.

Installing files you have downloaded from the Océ Web site

Note: *Our software engineers are permanently improving the drivers we supply with our products. We recommend that you regularly visit our Web site (<http://www.oce.com>) and consult the Download/Wide Format Printer Drivers section for downloading the most up-to-date version of the driver covered in this manual..*

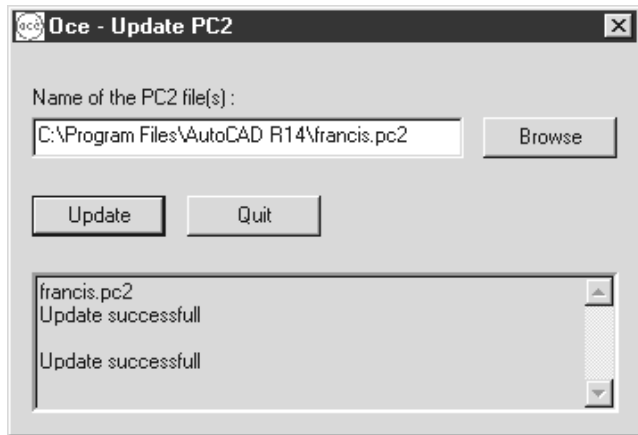
- 1 Follow the instructions on the Océ Web site to download, extract the files and open the setup program.
- 2 Then refer to 'Configuration' on page 10.

Updating the driver for AutoCAD 14

The previous Océ ADI driver version has been installed at the same time you installed AutoCAD-14 on your workstation. By installing the new version 2.5, you will now have access to new printers.

Caution: *Before continuing with the installation: First save the PC2 files (printer configurations). Next un-install the printers under AutoCAD 14. Then re-install the ADI driver.*

At the end of the installation process, the following dialog box appears to let you know you have to update .pc2 configuration files you have possibly stored on your hard-disk:



▼ **For each .pc2 file that needs to be updated:**

- 1 Click on the Browse button to select the file wherever it is stored on your disk
- 2 Click on Update. The file is then saved automatically.

Note: *Refer to the AutoCAD online help for detailed information on .pc2 files. It is not essential that .pc2 files are updated at the same time you are installing the new driver. You may run the **AutoCAD R14\updpc2.exe** application at a later time.*

Configuration

Configuring your plotter

This section will help you set your plotter to match the connection parameters set in AutoCAD software. It applies to all AutoCAD versions (DOS and Windows, either version 12, 13 or 14).

Connection through the parallel port

Delay	15 seconds recommended
Format	HP-GL/2
Interface	Centronics
HP-GL/2 origin	Lower right
HP-GL/2 pen priority	Set-up

Connection through the serial port

Refer to your printer user manual.

Defining a new plotter in AutoCAD

This section provides you with the necessary information for entering new plotters in AutoCAD's plotter list. The procedure applies to versions 12, 13 or 14 of AutoCAD-DOS and Windows.

▼ **To define a new plotter, proceed as follows:**

- 1 Run AutoCAD.
- 2 Select **Configure** from the **Options** menu (AutoCAD 13 or 14) or from the **File** menu (AutoCAD 12).
- 3 Press Return several times to get the **Configuration menu**.
- 4 Select option 5 **Configure plotter**.
- 5 Select option 1 **Add a plotter configuration**.
- 6 Select **Oce HP-GL/2 ADI Driver**
- 7 Select the plotter model and the correct firmware revision, from the list provided.

Note: *To know the revision of the firmware installed in your plotter, perform the Dump Configuration operation from your plotter's control panel.*

Depending on the selected plotter type, you will be prompted for questions specific to its features. These options are related to features offered in “Configuration Manager” (see page 12).

- 8 Select the port (interface) that the plotter will be connected to.
- 9 Select option 0 **Exit to configuration menu.**
- 10 Select option 0 **Exit to drawing editor.**
- 11 The plotter definition is complete. You may now fine tune the default plotting parameters to match your own requirements.

Plotting parameters

Select the **Print** command from AutoCAD’s **File** menu.

AutoCAD displays the Plot Configuration window. The active plotter’s name is displayed in the **Device and Default Information** box.

Changing pen parameters

- ▼ **To change pen parameters, proceed as follows:**
- 1 Click on the **Pen Assignments** button if you intend to change the pen parameters.
 - 2 AutoCAD displays the Pen Table window that allows you to define the line type and width for each logical pen number.
 - 3 Click on the **pen number** in the pen definition field and if necessary edit the parameters in the respective fields.
 - 4 Clicking on the **Feature Legend...** button provides an overview of the available line types.
 - 5 Click on the **OK** button once all pens have been defined.
 - 6 The displayed values become the new default ones and AutoCAD returns to the **Plot Configuration** window.
- Note:** *The pen settings can be set in Océ Configuration and also in the AutoCAD setup. This may result in conflicts.*

Selecting a new plotter and default settings

- ▼ **To define a new plotter, proceed as follows:**
- 1 Click on the **Device and Default Selection** button.
AutoCAD displays the plotter list. The highlighted plotter is the active one. It will use the pen parameters as defined on page 11.
 - 2 Click on the **Save Defaults to File** to store the pen assignments on your hard disk.
Later on, clicking on the **Get Defaults From File** button will reload these settings, which will then become the active ones.
 - 3 Clicking on the **Show Device Requirements...** button displays the active plotter configuration. (To select or define a new configuration, go to Configuration manager).
 - 4 To select a new plotter, click on its name in the plotter field then click on **OK** to return to the **Plot Configuration** window.

Entering the Océ Configuration Manager

Note: *Prior to opening the Océ ConfigurationManager, make sure an Océ plotter has been selected according to the above instructions.*

The purpose of Configuration Manager is to set up your plotter from AutoCAD, therefore specifying all relevant plotter settings from your workstation instead of from the plotter's control panel.

To activate Océ Configuration Manager, enter the **oceconfig** command at AutoCAD's prompt. From now on, refer to the contextual online help for further details.

Troubleshooting

• AutoCAD version 12 does not print

Problem: When a print job is submitted to the plotter via the parallel port LPT, the following message is displayed:

AUTOCAD ALERT. The operating system detected the following error(s) Plotter disabled. *Unknown error.

Explanation: The early versions of AutoCAD version 12 did not work properly when printing. The situation has been fixed with the release 12-C4. The necessary patches are available from Autodesk.

Workaround: Contact your Autodesk dealer to get the correct version. (The Autodesk's forum on Compuserve supplies also the files).

• Configuration Manager does not run correctly

Problem: The **oceconfig** command does not launch Configuration Manager and AutoCAD displays:

Unknown command "OCECONFIG". Type ? for lists of commands

In the same way, previously installed modules such as AutoVision cannot be launched anymore since the installation of the ADI HP-GL/2 driver.

Explanation: The Océ software installer has loaded a file called **acad.rx** (AutoCAD 13) or **acad.ads** (AutoCAD 12) that conflicts with an equivalent file necessary for other AutoCAD external software modules.

Workaround: Locate the **acad.rx** file (or **acad.ads**) in the installation directory of AutoCAD. Check that the file contains the **oceconf** command, then remove it from the directory.

Locate the other equivalent **acad.rx** or **acad.ads** on your hard disk. Open it and at the end of the previous text add the command **oceconf** and press **Return**, then save the file. The problem is fixed. Run AutoCAD.